

SMARTSYNC

Precision Maintenance for Smart Factories



SmartSync Maintenance Solutions

- Roof Coating Solution
- Waterproofing Solution
- Fire Protective Coating Solution
- Crack & Concrete Repair
- Floor Expansion Joint
- Floor Leveling
- Chemical Resistance Floor
- Wear and Tear Floor
- Anti-Slip Floor Coating



CONTACT US:

TH

096-989-5168 (KHANONG)
khanong.p@bluelabelgroup.com

ENG

093-089-1155 (VICTOR)
victor@bluelabelgroup.com

www.rhinozinternational.com

SMARTSYNC

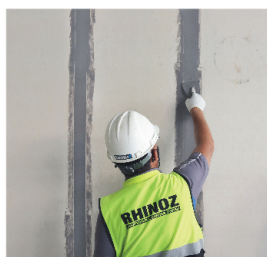
Precision Maintenance for Smart Factories

At SmartSync, we partner with industry-leading brands to deliver top-notch solutions in health, quality, and innovation. Collaborating with RHINOZ and Blue Label Co., Ltd. Thailand, we introduce advanced materials developed through global partnerships.

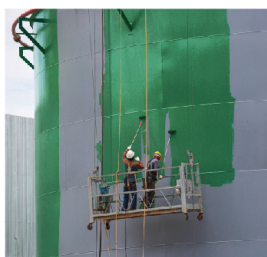
As representatives of VIACOR, we offer a range of certified floor coatings for various needs, ensuring compliance with strict solvent and VOC regulations. We also showcase ClimateCoating® from Germany, eco-friendly functional coatings with the "Greenguard" gold certificate, reducing CO₂ emissions through energy efficiency.

We represent Cafco® SPRAYFILM WB3 by PROMAT, an innovative fire-resistant coating for structural steel, providing up to 120 minutes of protection and meeting ISO 9001:2008 standards.

SmartSync is committed to excellence and sustainability. Join us in creating spaces that prioritize quality, innovation, and environmental responsibility.



CRACK REPAIRING SOLUTION



WATERPROOF SOLUTION



ROOF SOLUTION



FLOOR SOLUTION



FIREPROOFING SOLUTION

RHINOZ

ClimateCoating®
Reflective Membrane Technology

viacor.
inventive polymers

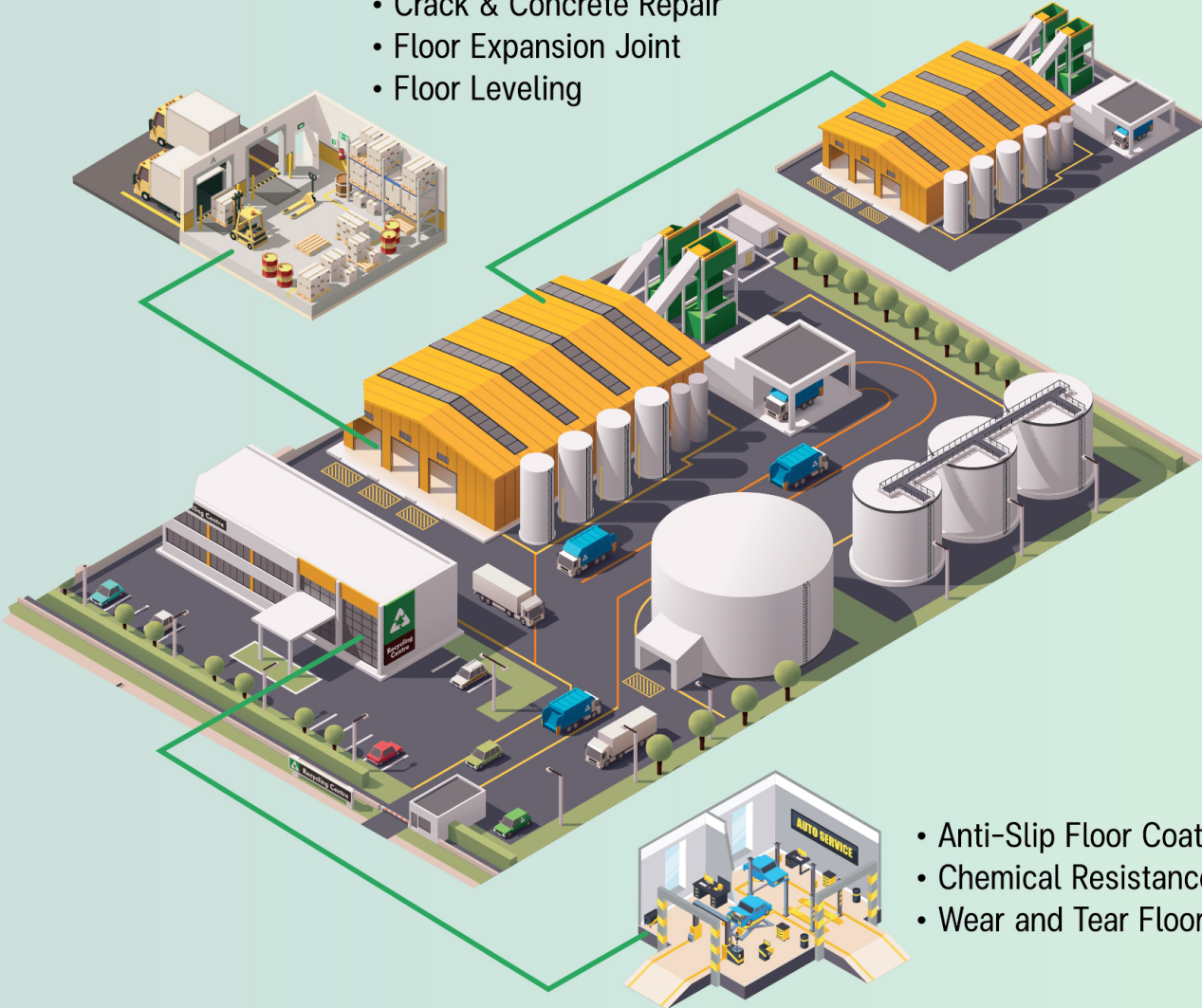
Promat



SmartSync Maintenance Solutions

- Crack & Concrete Repair
- Floor Expansion Joint
- Floor Leveling

- Roof Coating Solution
- Waterproofing Solution
- Fire Protective Coating Solution



- Anti-Slip Floor Coating
- Chemical Resistance Floor
- Wear and Tear Floor



Energy Inefficiency
Without heat reflection, building cooling systems overwork, wasting energy.



Carbon Footprint
Higher energy use leads to a larger carbon footprint, impacting sustainability.



Weather Damage
Vulnerability to leaks, flooding, and roof damage due to harsh weather.



Equipment Breakdowns
Machinery breakdowns halt production, causing costly downtime.



Downtime Impact
Every minute of downtime means lost revenue, necessitating quick repairs.



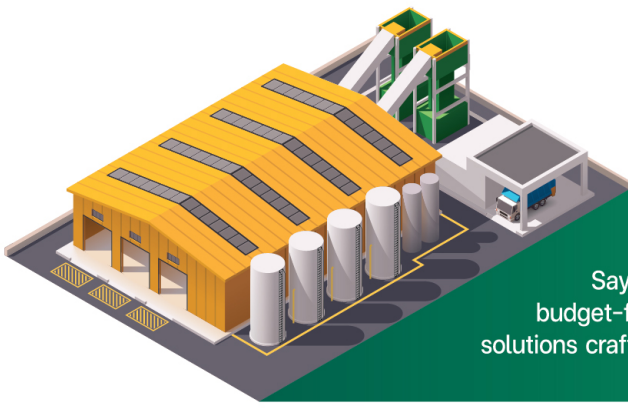
Accidental Damage
Forklift accidents, collisions, and mishandling of products causing damage.



Slips, Trips, and Falls
Common in warehouses due to spills, cluttered aisles, or improper flooring.



Fire Hazards
Combustible materials and faulty wiring increase fire risks.



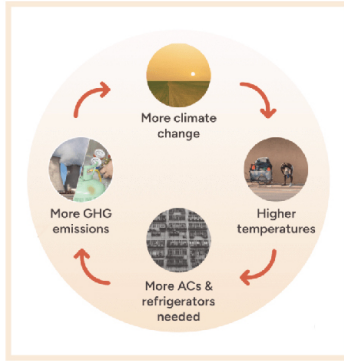
SMARTRoof Coating Solution

Step into the future with our revolutionary factory metal roofing solutions. Say goodbye to maintenance headaches and welcome seamless, durable, and budget-friendly roofs. Join us in transforming the industry with cutting-edge solutions crafted just for you.

Common Challenges and Problems



Heat Absorbed and Transferred



Energy Inefficiency



Corrosion Concerns



Loose or Missing Fasteners



Roof Coating Solution

Advanced Corrosion Resistance Coatings

Our metal roofing systems feature state-of-the-art coatings that provide superior protection against corrosion, extending the lifespan of your roof.

Seamless Waterproofing Solutions

Say goodbye to leaks with our seamless waterproofing systems, ensuring your factory remains dry and protected from water damage.

Energy-Efficient Insulation Options

Lessen energy costs and improve the aesthetics of the roof while helping extend its life by reflecting sunlight away from the surface, which reduces the transfer of heat into the building.

APPLICATION : • Metal Sheet Roof • Clay Tile Roof • Slate Roofing Tiles

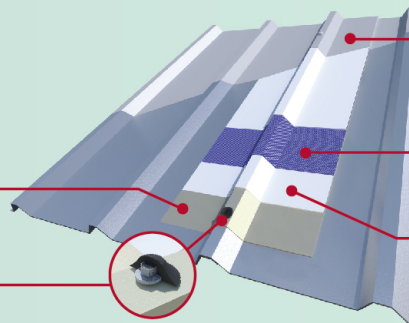
RHINOZ

RHINOZ PRIMER LATEX

1

RHINOZ HYBRID FX-55

2



5

RHINOZ SUN REFLEX

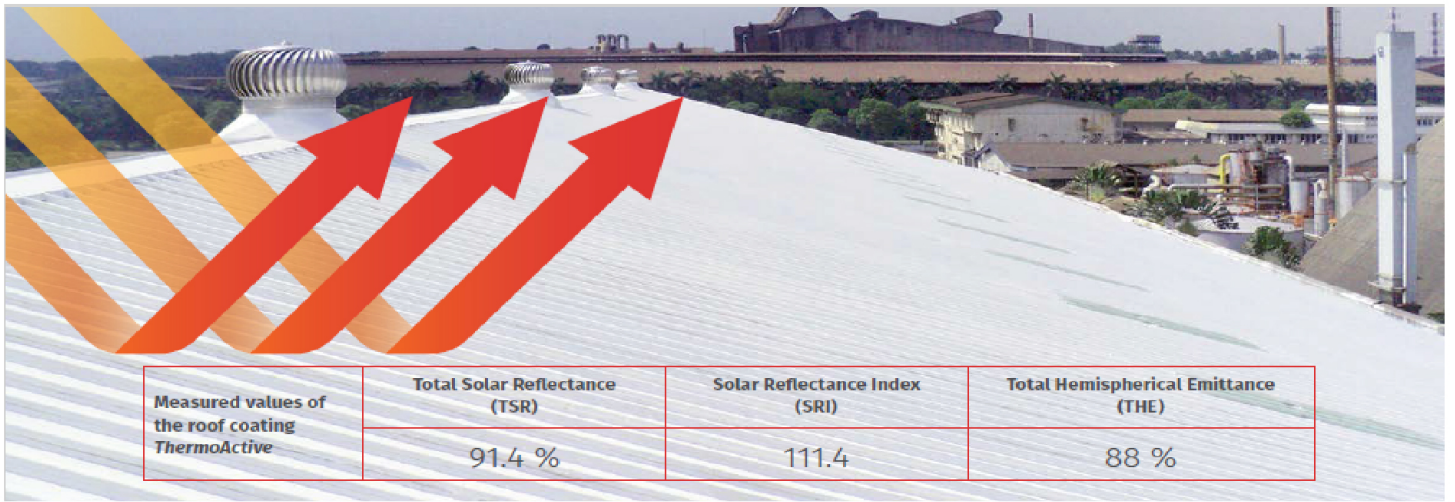
4

RHINOZ FIBERGLASS MESH TAPE

3

RHINOZ ROOFSEAL 401





Areas of application, properties and processing

ROOF TYPES



- flat roof
- pointed roof
- pitched roof
- for industrial buildings,
- commercial real estate and
- private houses

MATERIALS



- ferrous metal
- non-ferrous metal
- plastics
- synthetic fibres
- old and new plaster
- intact old coatings

CLIMATE ZONES



- warm temperate climate
- subtropical climate
- tropical climate
- cold temperate climate

CUSTOMER GOALS



- saving of cooling energy
- surface robustness
- water tightness against driving rain
- reduction of thermal stresses



Industriehalle in Malaysia. **Innen (vorher-nachher).**
Die Temperatur wurde um 19,3° C gesenkt.
 Nutzen: Verbesserte Arbeitsbedingungen, Energieeinsparung, Kostensenkung der Dachwartung.



The reflective roof coating with excellent cooling performance.

- reflects solar radiation by more than 91%
- significantly reduces energy consumption
- acts as a passive air conditioning system
- extends the life of the roof construction
- reduces operating and maintenance costs



PROPERTIES

- sunlight reflecting
- high and durable UV-resistance
- weather-resistant
- elastic
- gab/joint bridging
- high resistance against acids, alkalis, ozone, nitrogen and sulfur oxides



COLOUR TONE

- 100,000 color shades
- high colour stability

PROCESSING

- paint roller
- brushing
- spraying method



PACKAGING UNITS

- 19.0 (= 5.02 gal) / 12.5 / 5.0 l
- Consumption: 600 ml/m² on smooth, not highly absorbent surfaces with 2 applications
- with additional fiber embedding up to 1,000 ml/m² with 2-fold application



ThermoActive – the robust and water-resistant roof coating that keeps rooms cool under hot sun. We would be pleased to help you solve your problem.

www.climatecoating.com/en/products/thermoactive



| Table: Estimated total expenditure for thermal insulation of the test plant in Jaworz-Jasienica and the payback periods. | Energy savings in building ventilation 14,810 kWh resp. 8,145 Zł/year | Costs for the insulation of side and end walls (Zł) | | | simple pay-back period for the measure | |
|--|--|---|---------------|-----------------------------|--|-----------------|
| | | Side area (m ²) | 123.75 | Roof area (m ²) | | Total cost (Zł) |
| | | Front area (m ²) | 117.60 | 554.40 | | |
| Insulation with thermally reflective paint | | 7,837 | 19,128 | 26,964 | 3.3 years | |
| additional insulation – foamed polystyrene | | 36,367 | 47,398 | 83,765 | 10.3 years | |
| additional insulation – mineral wool | | 22,426 | 29,229 | 51,655 | 6.3 years | |
| additional insulation – closed-cell PU foam | | 16,424 | 21,406 | 37,829 | 4.6 years | |
| additional insulation – open cell PU foam | | 24,636 | 32,108 | 56,744 | 7.0 years | |



SMART Waterproofing Solution



Introducing our revolutionary concrete slab flooring solutions, redefining industry standards and eliminating persistent challenges. Say goodbye to maintenance headaches with our resilient, economical, and customized flooring solutions. Welcome a new era of streamlined excellence.

Common Challenges and Problems



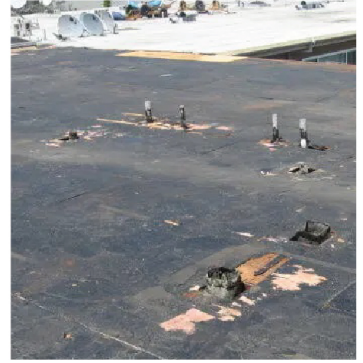
Cracking



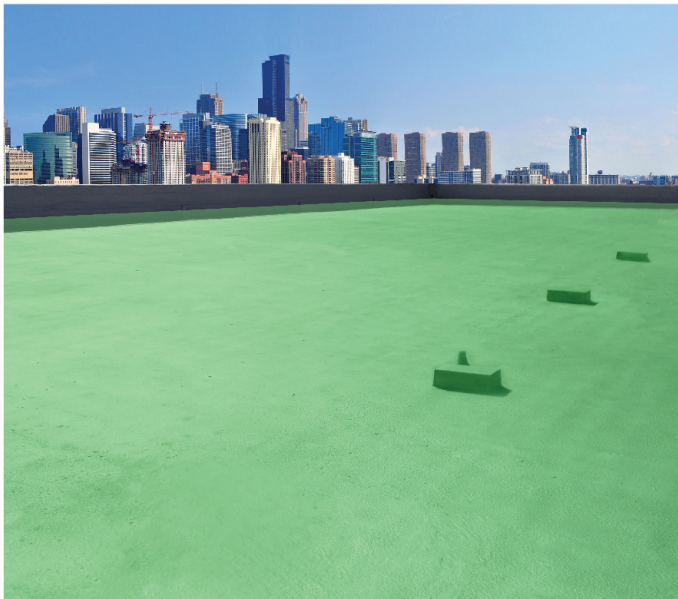
Moisture Intrusion



Water Damages



Bitumen Failures



Waterproofing Solution

High Strength and Flexible Jointing Material:

Install Hybrid Jointing Material along expansion joints strategically to accommodate thermal expansion and contraction, reducing stress on the slab and minimizing crack formation.

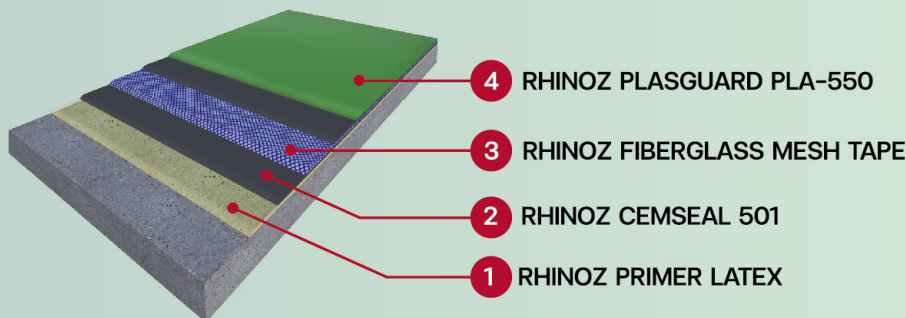
Anti-Microbial Additives:

Incorporate anti-microbial additives into the waterproofing material to inhibit the growth of mold and mildew on the surface.

Advanced and Durable Coatings:

Apply durable coatings or finishes that require less frequent maintenance and provide enhanced protection against wear and tear.

APPLICATION : • Rooftop • Roof garden • Drainage • Renovation of existing waterproofing or bitumen



RHINOZ



SMART Crack & Concrete Repair

SMART Floor Expansion Joint



Experience our groundbreaking warehouse floor leveling solutions, setting a new industry standard. Say goodbye to maintenance frustrations with our seamless, durable, and cost-effective solutions tailored to your needs. Welcome a new era of excellence.

Common Challenges and Problems



Uneven Surfaces



Cracks and Joints



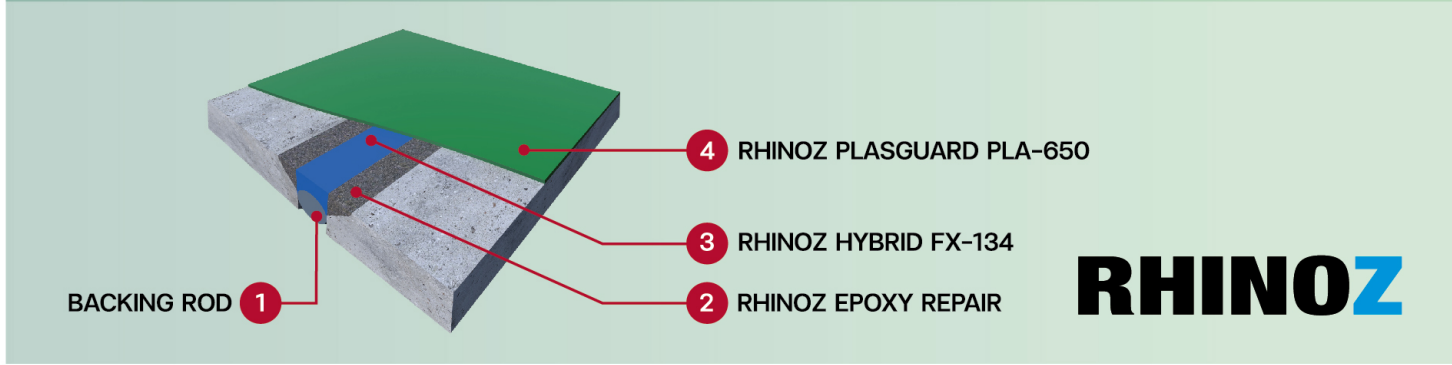
Moisture Problems



Crack & Concrete Repair / Floor Expansion Joint

- Self-Leveling Compounds:**
Use modern self-leveling compounds for smooth floors without labor-intensive work.
- Joint Fillers and Sealants:**
Apply quality fillers to prevent cracks and maintain floor strength.
- Moisture Mitigation Systems:**
Install moisture barriers like epoxy coatings for mold prevention and floor durability.

APPLICATION : • Stadium floor • Sport floor • Parking • Industrial floor • Cold room



SMART Anti-Slip Floor Coating

SMART Wear and Tear Floor



Welcome to a new era of anti-slip flooring solutions for factories, setting a new standard for safety and efficiency. Our innovative solutions address slip hazards and maintenance challenges, providing secure, durable, and cost-effective flooring. Say goodbye to common safety concerns and embrace a safer future.

Common Challenges and Problems



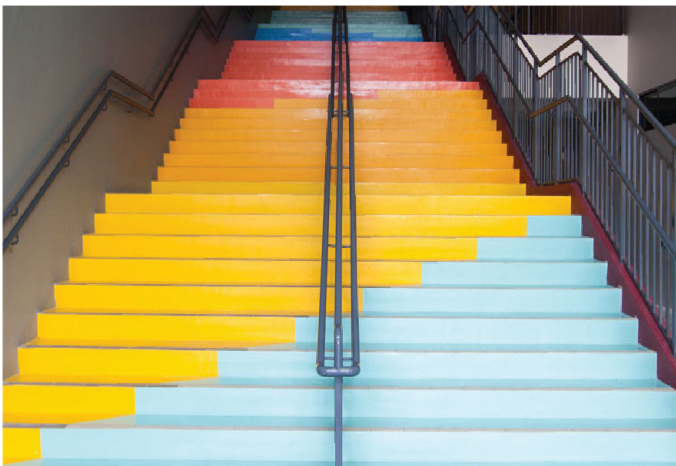
Slip Hazards



Wear and Tear



Safety Compliance



Anti-Slip Floor Coating / Wear and Tear Floor

Anti-Slip Coatings:

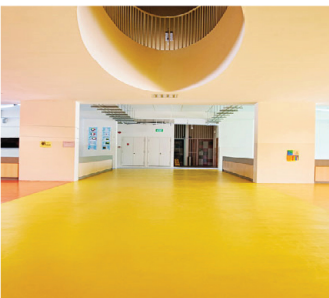
Apply specialized coatings with high traction properties to create a slip-resistant surface, even in the presence of oils or liquids.

Wear and Tear Resistance:

Implement durable materials resistant to wear and tear, ensuring longevity and minimizing the need for frequent repairs.

Safety Signage and Markings:

Clearly mark high-risk areas with visible signage and floor markings to alert workers and visitors of potential slip hazards.



FEATURES OF THE VIACOR PRODUCTS:



HYGIENIC SURFACES



HACCP INTERNATIONAL CERTIFIED



GMP
fulfills the GMP guidelines



IFS
fulfills the IFS-Standards



VERY LOW EMISSIONS
in accordance with AgBB, M1 and other standards in the food processing industry



WATERTIGHT



SOLVENT-FREE



ANTI-SLIP
from R9-R13



CONDUCTIVE



CHEMICALLY-RESISTANT



IMPACT-RESISTANT



ABRASION-RESISTANT



THERMAL-SHOCK-RESISTANT



ODOURLESS
no odour or taste cross-contamination across foodstuffs



EASY TO CLEAN
easy to clean and maintain



FIRE SAFETY B_{fl}-s1
in accordance with EN13501-1



JOINTLESS



UV-RESISTANT
ALTERNATIVE

SYSTEM COMPARISON

| | VIACRETE MF standard | VIACRETE MF standard SR | VIACRETE UD heavy-duty | VIACRETE HF hi temp |
|---|---|---|--|---|
| System coating strength | 3-6 mm for higher thickness use 2 layers | 4.0 - 6.0 mm | 6.0 - 9.0mm | 6.0 - 12.0 mm |
| Thermal resistance dry and wet (hot water) | -5 °C to +70 °C (3 - 4 mm) -15 °C to +90 °C (5 - 6 mm) | -5 °C to +70 °C (3 - 4 mm) -15 °C to +90 °C (5 - 6 mm) | -15 °C to +100 °C (6 mm) -25 °C to +120 °C (9 mm) | -15 °C to +100 °C (6 mm) -25 °C to +120 °C (9 mm) -45 °C to +120 °C (12 mm) |
| Anti-slip properties | Homogenous surface at least R 9 | Textured surface R 10 to R 13 | Low textured surface R 10 | Low to medium textured surface R 10 to R 11 |
| Chemical resistance | Very good | Very good | Excellent | Excellent |
| No water absorption in accordance with the »European Directive on the Hygiene of Foodstuff« | 0 g /24 h | 0 g /24 h | 0 g /24 h | 0 g /24 h |
| Tes-MB-216 bacterial cleanability | > 3.26 Log ₁₀ | > 3.26 Log ₁₀ | > 3.26 Log ₁₀ | > 3.26 Log ₁₀ |
| Abrasion-resistant | ≤ 25 mg | ≤ 25 mg | ≤ 25 mg | ≤ 25 mg |
| Impact strength | ≥ 4 Nm (IR4) | ≥ 4 Nm (IR4) | ≥ 4 Nm (IR4) | ≥ 4 Nm (IR4) |
| Fire behaviour class | B _{fl} -s1 | B _{fl} -s1 | B _{fl} -s1 | B _{fl} -s1 |

VIACRETE Systems



HYGIENIC SURFACES



CHEMICALLY-RESISTANT



HACCP INTERNATIONAL CERTIFIED



IMPACT-RESISTANT

KITCHENS & CATERING

Hygienic and seamless flooring systems with slip resistant profile

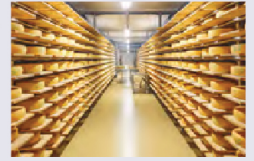
Systems: / VIASOL UNIVERSAL SR
/ VIACRETE MF standard SR



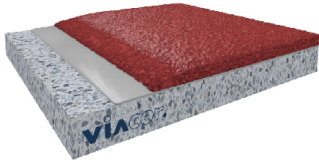
FOOD & BEVERAGE

Extremely robust flooring systems for F & B industry (HACCP International certified)

Systems: / VIACRETE MF standard
/ VIACRETE MF standard SR
/ VIACRETE HF hi-temp
/ VIACRETE UD heavy duty



VIACRETE MF standard SR



Seal Coat:

VIACRETE PU-TC^{VM}

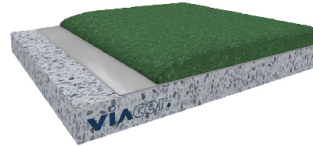
PU Concrete:

VIACRETE PU-MF^{VM} + scatter different aggregate

Primer / scratch coat:

VIACRETE PU-MF^{VM}

VIACRETE HF hi temp



PU Concrete:

VIACRETE PU-HF^{VM}

Primer / Scratch Coat:

VIACRETE PU-MF^{VM}

VIASOL Systems

VIASOL INDUSTRIAL FLOORING SYSTEMS ARE SPECIALLY DEVELOPED SURFACE PROTECTION SYSTEMS FOR EVERY FIELD OF APPLICATION.



LABORATORIES & CLEANROOMS

Seamless hygienic chemical resistant flooring systems

Systems: / VIASOL PROTECTIVE
/ VIASOL PERM
/ VIASOL UNIVERSAL



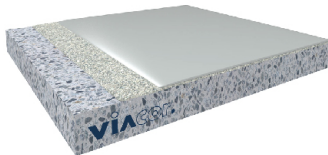
ESD

Conductive floor coatings for ESD protected areas

Systems: / VIASOL UNIVERSAL voltex
/ VIASOL PERM conductive
/ VIASOL PERM protective conductive
/ VIACRETE MF standard voltex



VIASOL PROTECTIVE



Seal coat:

VIASOL EP-S600^{VM}

Primer:

VIASOL EP-P210^{VM} or VIASOL EP-T703^{VM}

optional broadcasted with sand

VIASOL PERM protective conductive



Coloured layer / Seal Coat

VIASOL EP-S6480 AS^{VM}

Conductive layer

VIASOL EP-E480^{VM}

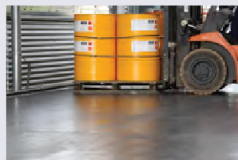
Primer:

VIASOL EP-P285^{VM}

PRODUCTIONS & WAREHOUSES

High impact and durable flooring systems for production halls and logistics

Systems: / VIASOL COMPACT plus
/ VIASOL COMPACT
/ VIACRETE systems



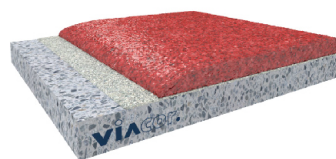
CAR PARKS & PARKING AREAS

Surface protection for ramps, spiral ramps, exposed and intermediate decks

Systems: / VIASOL DECK OSB
/ VIASOL DECK 11a plus
/ VIASOL DECK 11b plus
/ VIASOL PERM DECK



VIASOL COMPACT plus



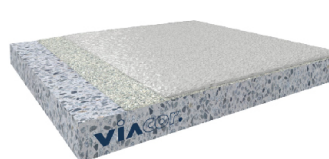
Mortar Resin:

EP-T707^{VM} / P

Primer:

VIASOL EP-P210^{VM} + scattered quartz sand

VIASOL DECK OSB



Seal Coat:

VIASOL EP-S600^{VM}

Primer:

VIASOL EP-T703^{VM} or EP-P210^{VM}

broadcast with QS 0.3-0.8 mm



viacor.
inventive polymers



SMARTFire Protective Coating Solution

Embark on a revolutionary journey with our fire protective coatings for factory structures. Say goodbye to fire safety concerns with our innovative, tailored solutions. Experience enhanced protection, durability, and cost-effectiveness for your factory buildings.

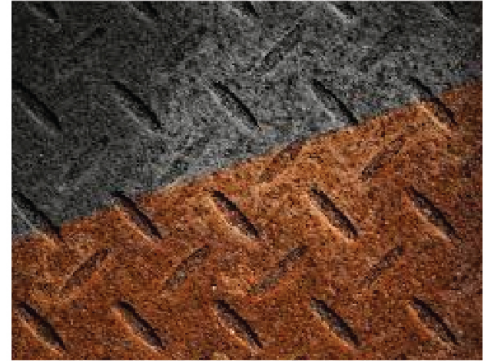
Common Challenges and Problems



Fire Hazards



Safety Compliance



Durability



Fire Protective Coating Solution

Fire-Retardant Coatings:

Apply advanced fire-retardant coatings to structural elements, walls, and equipment, providing a protective barrier against flames and heat.

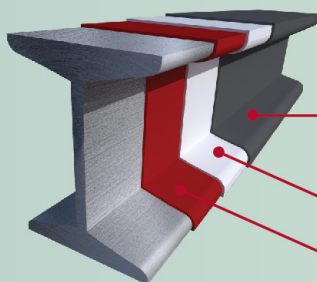
Rust Converter Coatings:

Implement rust converter coatings to halt corrosion on metal surfaces, preserving structural integrity and preventing fire hazards.

Non-Toxic Coating System:

The water-based barrier coating provides effective fire protection properties while also ensuring safety from toxic gases. It is cost-effective, fast, easy to apply, reliable, and provides effective protection for your building structure.

APPLICATION : • Rooftop • Roof garden • Drainage • Renovation of existing waterproofing or bitumen



3 RHINOZ FIREOFF T-202 Fire Retardant Epoxy Top Coat 2K / RHINOZ FIREOFF T-203 Fire-Retardant Polyurethan Top Coat / RHINOZ FIREOFF T-204 Fire Retardant Acrylic Hybrid Top Coat

2 RHINOZ FIREOFF P-201 Anticorrosive Epoxy Primer 2K

1 RHINOZ FIREOFF R-200 Rust Converter

RHINOZ

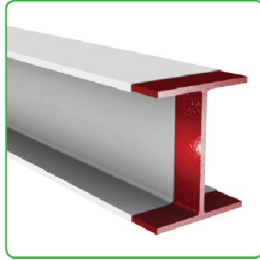


General Description

Cafoco SPRAYFILM® WB3 is a water based intumescent coating consisting of polyvinyl acetate resins and fillers for the fire protection of structural steel. It is preferably spray applied with airless paint equipment for speed and quality of finish. Brush and roller application is also possible.

Cafoco SPRAYFILM® WB3 can be sealed and protected with a decorative top coat. It is applied directly to the contour of primed I and H section columns, angles, channels and beams and both square and circular hollow sections, to provide fire protection for up to 120 minutes.

In a fire, a chemical reaction takes place causing the Cafoco SPRAYFILM® WB3 to expand and form an insulating layer which slows the temperature of the steel rising to a critical level.



Applications

Structural steel column and beam coating fire protection for building and construction industries. For the complete information of substrate preparation prior to applying Cafoco SPRAYFILM® WB3 product, installation methods, fire protection thicknesses, application limitations etc, please contact Promat for the Cafoco SPRAYFILM® WB3 application guide.

Fire protection thickness

The thickness of the fire protection for a given period of fire resistance in cellular type fire, relates to the Hp/A ratio of the steel section. Hp/A is the ratio of the heated perimeter of a steel section exposed to fire to the cross sectional area of the same steel. All column and beam sections have their own specific Hp/A ratio. Please refer to the tables on pages 4 to 10 on thickness for the fire resistance required. Otherwise please consult Promat to establish the Hp/A ratio for a particular beam or column section and to ascertain the required thickness of Cafoco SPRAYFILM® WB3.

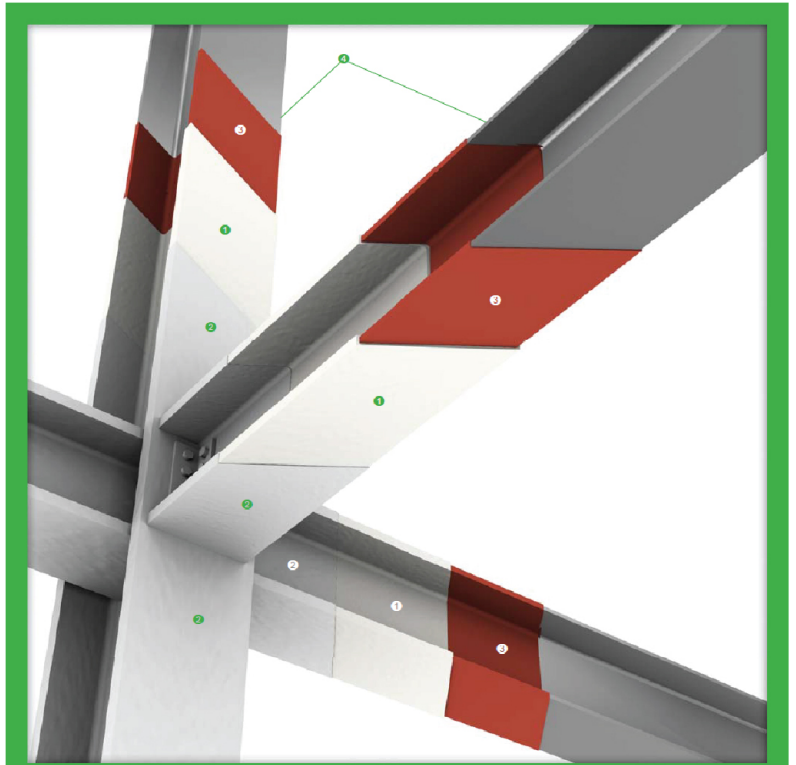
General Technical Properties

| | |
|---|---|
| Fire resistance | Steel structures protected with Cafoco SPRAYFILM® WB3 have undergone fire resistance tests up to 120 minutes in approved independent laboratories to recognised standards throughout the world, including: <ul style="list-style-type: none"> Australia (AS 1530; Part 4: 2005) UK (BS 476; Part 21: 1987) Canada and USA (ASTM E84 and E119: 1998) Fire resistance test results are assessed in accordance with ASFP "Fire protection for structural steel in buildings" procedures. If UL certification is required, please consult Promat. |
| Surface burning (ASTM E84: 1998) | Flame spread 5, smoke development 35 |
| Alkalinity | pH 8.0 ± 0.2 at 25°C |
| Theoretical coverage | Approximately 18.7m ² per container at 0.7mm DFT |
| Practical coverage | Dependent on surface texture, substrate, application method and technique. |
| Number of coats | One or more as required |
| Maximum thickness (WFT) per coat | 1.6 using spray 0.76 using brush For airless spraying, several thin coats as opposed to one heavy coat will give greater control over finish and thickness. |
| Cure | By air drying |
| Initial set at 20°C, 50% RH and 0.4mm WFT | Approximately 6 hours |
| Density | kg/litre 1.33 |
| Solids by weight | 70% ± 2% |
| Impact resistance (ASTM D2794: 1993-2010) | kg/m 18 |
| Durometer hardness (ASTM D2240: 2005-2010) | 80 shore D |
| Abrasion resistance at 1000 cycles (ASTM D4060: 1995) | g 0.6505 |
| Colour and texture condition | White with a flat matt finish |

NOTE: 1mm = 100µm (microns)

| Packaging | Storage | Shelf life | Environmental |
|--------------------|--|---|---|
| 25kg plastic pails | <ul style="list-style-type: none"> Indoors in dry conditions between 10°C and 38°C. Protect from frost, excessive heat (above 45°C) and strong radiant sunlight. | Maximum 10 months in original sealed containers | Do not discharge into drains, watercourses or soil. |

Cafoco SPRAYFILM® WB3 is manufactured under a quality management system certified in accordance with ISO 9001: 2008. For complete UL listing to application of the product, please visit UL website at <http://www.ul.com>.
 GUARANTEE ADEQUATE VENTILATION DURING WORK. AVOID CONTACT WITH THE EYES AND SKIN AND AVOID INHALATION OF THE DUST BY WEARING APPROPRIATE PERSONAL PROTECTION GEAR (SAFETY GOGGLES, PROTECTIVE CLOTHING AND DUST MASK). FOR MORE INFORMATION PLEASE CHECK THE MATERIAL SAFETY DATA SHEET, AVAILABLE UPON REQUEST.



Up to 120/- fire resistance in accordance with the requirements of BS 476: Part 21: 1987 and/or AS 1530: Part 4: 2005

- 1 Spray, brush or roller applied Cafoco SPRAYFILM® WB3 water based intumescent coating, thickness in accordance with the Hp/A Ratio tables on pages 4 to 10
- 2 Spray, brush or roller applied CAFCO® TOPCOAT 200 acrylic polymer coating as a top coat sealer for humid or external applications and use in moisture laden conditions or wet areas
- 3 Primer approved by Promat
Please consult Promat and refer to application documents for the approved range of primers and top seals.
- 4 Structural steel column and beam. Clean, dry and free from dust, oil, loose mill scale or rust and any other condition preventing good adhesion AND blast cleaned in accordance with the requirements of AS 1627: Part 4 and SA 2.5 (ISO 8501-1: 1998) prior to applying the primer



Disclaimer : The technical data provided in this publication, inclusive of Rhinoz, Promat, Viacor, and ClimateCoating®, is based on mean values prevalent at the time of publication and is subject to fluctuation. It should not be regarded as a guarantee of system performance. All data contained herein conforms to and frequently surpasses generally accepted standards recognized by most professional practitioners and regulatory authorities worldwide. The same general principle is equally applicable to all Rhinoz, Promat, Viacor, and ClimateCoating® products and systems. Rhinoz, along with Promat, Viacor, and ClimateCoating®, has access to a considerable body of test authentication data, which can be provided on a complimentary basis upon request. However, it should be noted that this publication replaces all previous editions in its entirety. Any form of reproduction by any means - manual, electronic, digital, or otherwise - is strictly prohibited and subject to prior approval in writing from Rhinoz, Promat, Viacor, and ClimateCoating®. All rights related or connected to the Rhinoz, Promat, Viacor, and ClimateCoating® logos, registered trademarks, featured illustrations, written information, and technical reports in this publication are the sole, exclusive, and copyright property of Rhinoz, Promat, Viacor, ClimateCoating®, and their legal partner companies.

Authorized Distributed by:



CST Global Co., Ltd.

9/56 Moo 5 Bangnumjued, Mueang, Samutsakhon, 74000

Tel: 034-494-773 Fax: 034-494-772

Distributed by:

